

SPEKTRA MASTER 720W



01



Spektra Master 720W

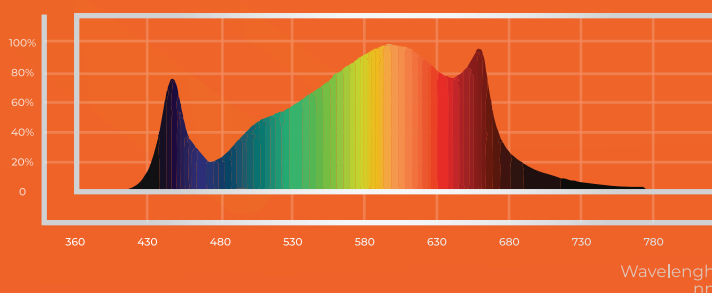
Spektra Master LED 720W is a LED fixture with 6 light bars. The device is intended for use in greenhouses or air-conditioned grow room with PPF of 2016 micromole/s/m², providing the best light penetration to your plants. Spektra Master offers excellent full spectrum for all phases of cultivation. The natural looking light emitted by the Spektra Master 720W LED makes it easy to precisely monitor the health of your plants.

Perfect for 150-150 + 120-120 cm surface!

Specifications

- Light Source: LED
- Spectrum: Full Spectrum
- PPF: 2016 mmol/s
- Input Power: 720W
- Input Voltage: 100-227V
- Efficiency: 2.8 mmol/j
- Dimensions: 119.5 - 110.8
- Weight: 7.5KG
- Cooling: Passive Cooling
- Light Distribution: 120 Degrees
- Lifetime: L90: > 54.000 Hours
- Power Factor: > 90%
- Warrantee 3 Years
- Certification: IP66, CE
- Volt: 120V-208V-240V-288V
- Ampere: 5.76A-3.32A-2.88A-2.50A
- Mounting Height: 50 cm above Canopy

Measurements of Normalized Photosynthetic Photon Flux



Spektra Master



Spektra Master

The lighting system that is being referred to in this text has a variety of convenient features that allow for ease of use and customization. One of the most notable features of this system is its manual dimming capabilities, which can be adjusted to different levels (25%, 40%, 60%, 80%, and 100%) depending on the desired lighting atmosphere.

Thermal management: Passive cooling

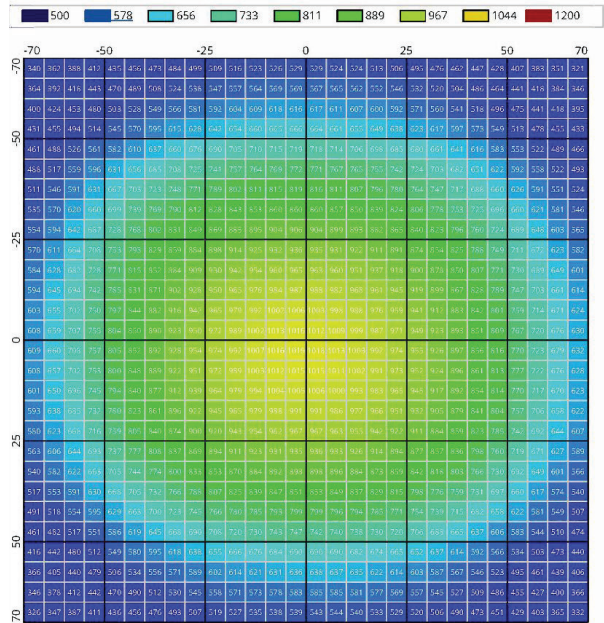
Light distribution: 120 Degrees

Dimmable with External Controller 0-10 Volt

140*140 TESTED AREA 50 CM HEIGHT

Measurement report

Date of measurement	2023-04-11 15:41
Name of measurement	Spektra Master 720W
Measured area	1.96 m ² / 140 x 140 cm / 5 cm grid
Distance	50 cm
Input power	749 W
PPFD (min/max/avg)	320.8/1018.9/708.3 μmol/m ² /s
Coefficient of variability	0.2444
Uniformity min/avg	0.4530
Usable PPF	1388.17 μmol/s
Usable PPE	1.8534 μmol/s



02

03



3.13 Amp at 240 volt